

## MEET OUR TEAM

Stacy Hastie  
Chief Executive Officer

---

Mike Cochran  
Executive Director of Operations

---

Greg Sutton  
General Mining Manager

---

Richart Peters  
General Manager - Process Operations

---

Allister Aaron  
Chief Financial Officer

---

Marek Badyoczek  
Director of Processing

---

Sherry Hamby-Vance  
Director of Human Resources

---

**CLEAN**  
**ETHICAL BATTERY MINERALS**  
**POWERING A GREEN FUTURE**



## GET IN TOUCH



(573) 317-4297



HR@mocobalt.com



1050 Madison 263  
PO Box 71  
Fredericktown, MO 63645



[www.mocobalt.com](http://www.mocobalt.com)

## CAREER OPPORTUNITIES

Apply at: [www.mocobalt.com/careers](http://www.mocobalt.com/careers)



Missouri Cobalt LLC is  
committed to fostering,  
cultivating, and preserving  
a culture of diversity,  
equity, and inclusion

---

[www.mocobalt.com](http://www.mocobalt.com)

## COMPANY OVERVIEW

Missouri Cobalt LLC is the only vertically integrated cobalt and nickel producer in North America and is strategically positioned to supply clean, domestic, and ethically sourced battery metals required to meet the unprecedented demand for electric vehicles and lithium-ion batteries.

- PRNewswire

## ENVIRONMENTAL CLEANUP

In early 2018, Missouri Cobalt LLC, in tandem with its sister company Environmental Operations, began the remediation of the Madison Mine Superfund. Since then, Missouri Cobalt LLC has changed the conditions of the site by returning it from contaminated lands to long-term sustainable and productive reuse, creating an industrial site where mining-related activities are performed. In 2019, Missouri Cobalt LLC, constructed a mine tailings process facility to recover valuable metal concentrates from existing mine waste, reducing toxicity and the volume of mine waste. In March of 2022, Missouri Cobalt LLC had its first open-cut blast to begin the process of going underground. Missouri Cobalt LLC hopes to increase production and extraction, creating more than 250 local jobs. This will significantly affect the local economy through increased use of local goods, services, and housing.

## NEWS

"We are delighted to welcome Glencore, one of the world's leading producers and marketers of physical commodities, as our commercial partner. US Strategic Metals will benefit from Glencore's strong customer relationships across the electric vehicle supply chain, including global auto OEMs and battery manufacturers. Additionally, proceeds from the pre-payment will allow us to accelerate the construction and commissioning of our hydromet facility."

- Stacy W. Hastie

## OUR MISSION

- Become the leading domestic supplier of battery metals to power the energy transition

## OUR VISION

- Missouri Cobalt LLC is determined to provide an employee experience that consistently engages and rewards employees for high-quality work. We seek to provide a culture that is defined by an engaging work environment, professional coaching, flexibility, safety, and trust. We will strive to reward and recognize the efforts and achievements of our employees, commit to personal development and growth, and continue to drive the recruitment and training of top talent.

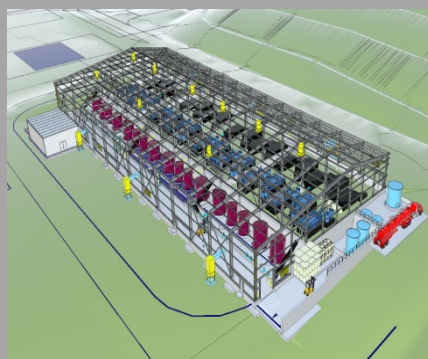
## ENVIRONMENTAL STEWARDSHIP

- Reliable, conflict-free supply
- Skilled workforce
- Driving the future
- Good stewards of the land - leaving it better than it was when we began

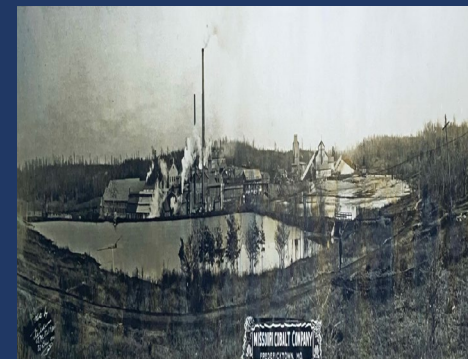


## WHAT'S TO COME

A hydrometallurgical processing plant that will separate and refine metals into battery-grade products



## HISTORY OF MISSOURI COBALT LLC



### Multiple Owners 1847 - 1920

- Buckeye Copper Mining Company
- North American Lead Company
- 1906 – First attempt at smelting CU/CO/NI Concentrates

### 1942 – 1961

- National Lead (St. Louis Smelting and Refining)
- Full operations

### 1979 - 2017

- Anschutz Mining Corp
- Feasibility study
- Pumped out North Mine Workings

### 2018

- Missouri Cobalt Company established
- EPA Superfund Remediation
- Continuous drill program to expand the underground resource
- Operation of a concentrator to convert tailings to concentrate
- Construction of a premier processing plant